

Snow Day Art Lesson

The lesson includes instructions and a drawing guide plus if you have access to the internet (even on a Smartphone) you can use the link to follow a Draw Along Video (there are other drawing projects on the page as well that you could try out)

<https://www.deepspacesparkle.com/tmc/substitute-plan-2-0-bundle-video-page/>

A blank piece of paper has been provided for you but you can use any paper you have available at home, if you have a sketchbook you can use that as well. The lesson can be colored by using crayons, markers, colored pencils, or if you have none of those materials at home you can simply use a pencil or pen to create a black and white version.

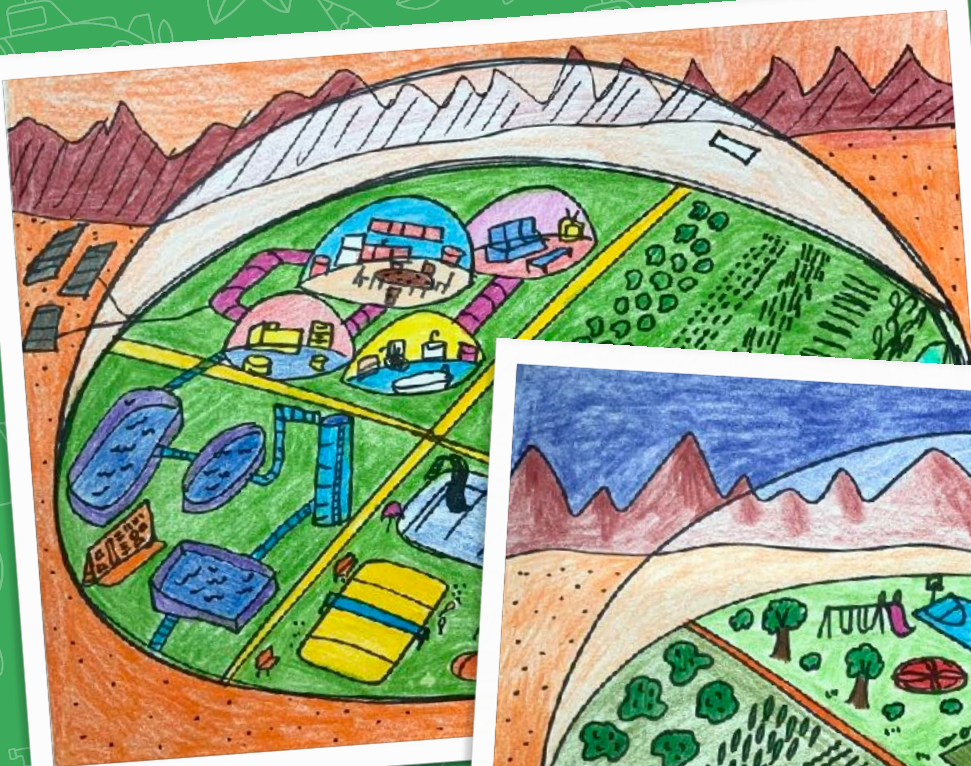
I have also included a Roll a Dice Drawing Activity you can do with everyone in your house. You will need to borrow a dice from a board game. All you need to do is roll the dice to determine what you need to draw. Once the drawing is complete you can add color.

Hope you enjoy your Snow Day Art Lessons and see you soon,

Mrs. Mitchell

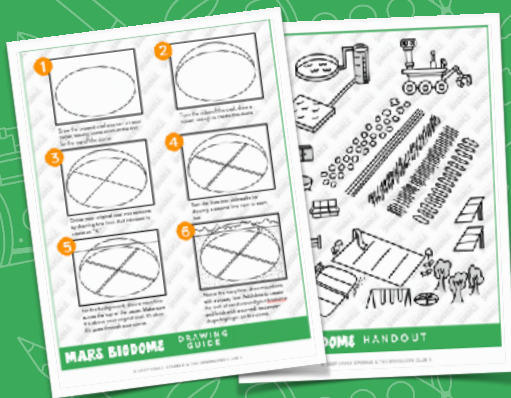


5-7



DRAW ALONG
 **VIDEO**
INCLUDED

MARS BIODOME DRAW ALONG

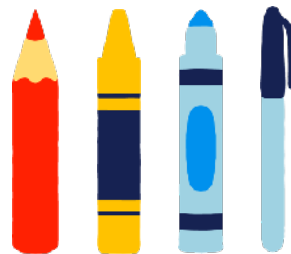


Time Needed
1 Session at
50 Minutes



Topics Covered
Space & Form

What You'll Need



MARS BIODOME DRAW ALONG



THE CHALLENGE:

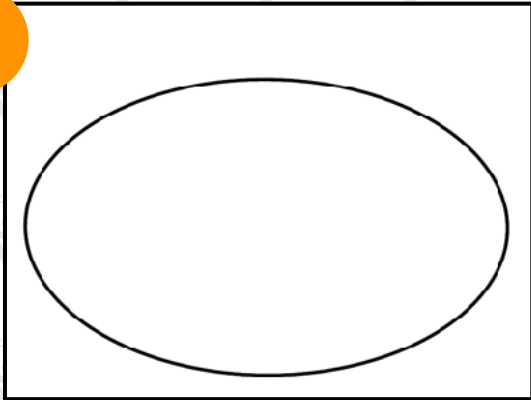
Design a biodome habitat to keep humans alive and happy on Mars.

WHAT YOU'LL NEED:

- 9" x 12" white sulphite paper
- Crayons, markers or colored pencils
- Black permanent marker (optional)
- Mars Biodome Drawing Guide
- Mars Biodome Handout

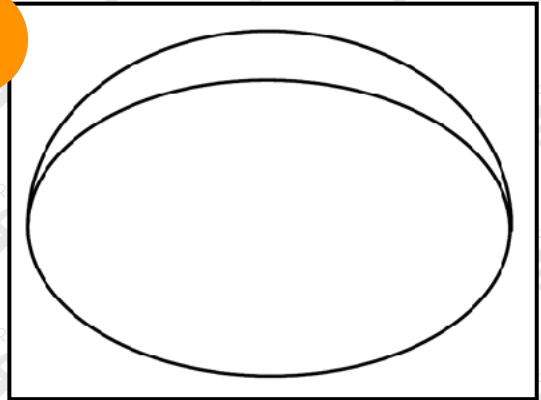
- * Today I will learn about **SPACE** so that **I CAN** create a sense of **DEPTH** in my biodome artwork.
 - * **NCAS: CREATING** Anchor Standard #1: Generate and conceptualize artistic ideas and work.
1. Give each student a piece of **white paper**.
 2. Pass out **crayons, markers or colored pencils**.
 3. Instruct students to follow along with you as you draw a Mars biodome on the board or play the draw along video that accompanies this lesson. Draw a wide rectangle first to represent the paper.
 4. Students should use a **black crayon, marker, colored pencil or black permanent marker** to draw their biodome.
 5. Draw a Mars biodome with the students using the **"Mars Biodome Drawing Guide"** on the next page. It doesn't have to look just like the example.
 6. Instruct students to add additional details to add life to their biodome. Each section inside their dome should help sustain life on Mars: recreation, garden, water treatment, housing, etc.
 7. Students can use the **"Mars Biodome Handout"** for ideas. Collect handouts at the end of class.
 8. They may use the back of their paper to re-draw their Mars biodome if they choose. No new papers should be handed out. Students need to work with their "mistakes."
 9. Students may color using the colors of their choice.
 10. Instructions for art (*take home, portfolio, etc.*)

1



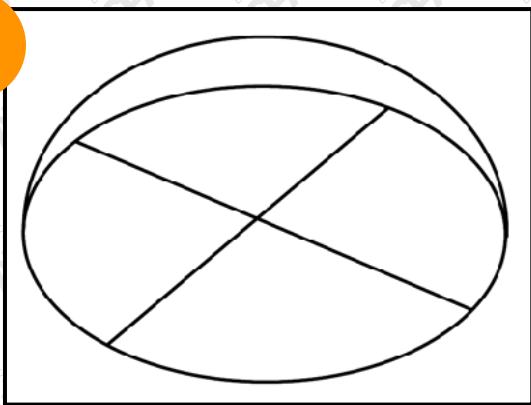
Draw the biggest oval you can on your paper, leaving some room at the top for the top of the dome.

2



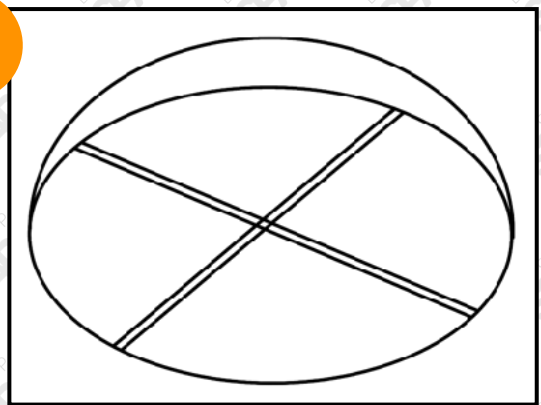
From the sides of the oval, draw a curved line up to create the dome.

3



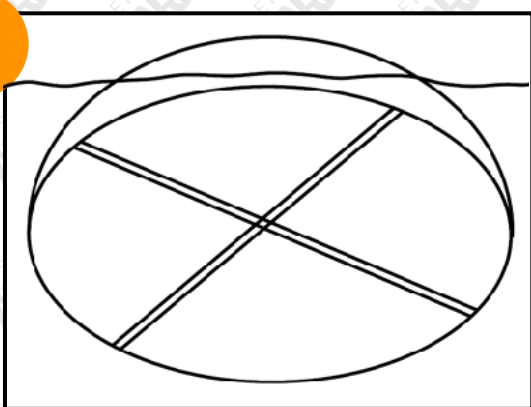
Divide your original oval into sections by drawing two lines that intersect to create an "X."

4



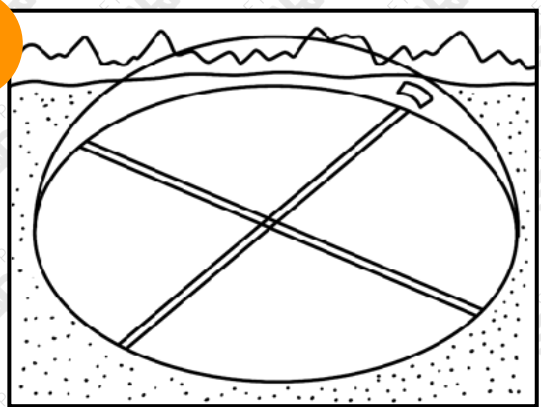
Turn the lines into sidewalks by drawing a second line next to each line.

5



For the background, draw a wavy line across the top of the paper. Make sure it is above your original oval. It's okay if it goes through your dome.

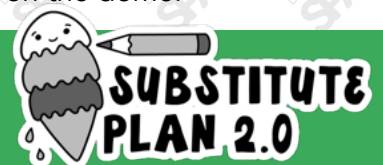
6



Above the wavy line, draw mountains with a zigzag line. Add dots to create the look of sand around your biodome and finish with a curved, rectangle-shape highlight on the dome.

MARS BIODOME

DRAWING GUIDE



Roll a Drawing: Monsters

Roll the die. On each turn, draw the image next to your number!

	Roll One: Face	Roll Two: Body	Roll Three: Arms	Roll Four: Ears	Roll Five: Eyes	Roll Six: Snout
